

國立台灣藝術大學進修學士班招生考試樂理試卷

一. 和聲題 以下列數字低音, 完成混聲四部和聲, 並標示調性及和絃級數或功能代號. 20%

二. 和絃結構辨認

請寫出下列和絃及其轉位之名稱. 10%

例: 小三和絃原位

三. 音程 20%

1. 寫出下列各題兩音之間的音程名稱

2. 在指定音上方填加一音, 使其成為指定的音程.

四. 音階 以D為主音, 寫出指定的音階 12%

1. 和聲小音階

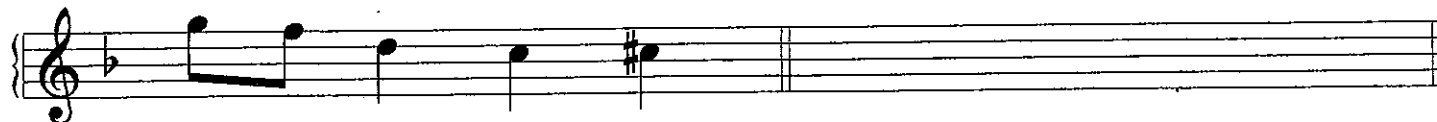
2. 全音音階

3. 弗里吉安調式

4. 中國徵調式五聲音階

五. 移調 (應寫出正確調號). 8%

1. 將下列曲調移低大六度



2. 將下列曲調移高完全四度



六. 選擇題 30%

1. () 神劇"四季"的作曲者為(1)舒伯特(2)海頓(3)韓德爾(4)莫差爾特
2. () Allargando是(1)甚快板(2)行板(3)漸慢而強(4)生動活潑
3. () 下列何者不是速度術語(1)vivace(2)moderato (3)andante(4)maestoso
4. () 下列何者不是移調樂器(1)英國管(2)單簧管 (3)法國號(4)短笛
5. () 薩克斯風屬於何種樂器(1)銅管(2)木管 (3)弦樂(4)鍵盤
6. () 若基礎音為E, 第四個泛音為(1)E(2)B (3)G#(4)D
7. () 清唱劇的原文為(1)Opera(2)Cantata (3)Sonata(4)Oratorio
8. () E大調的關係調為(1)A大調(2)C大調 (3)F#小調(4)C#小調
9. () 自然小音階同下列何者?(1)弗里吉安(2)依奧利安 (3)利地安(4)多里安調式
10. () 歌劇茶花女的作者為(1)威爾第(2)莫差爾特 (3)韋瓦第(4)普契尼

國立臺灣藝術大學進修學士班招生考試

作曲組筆試

(自錄)

一. 將下列旋律配以四聲部和聲, 並標示調性與羅馬數字.

A musical staff in 4/4 time with a key signature of one flat (B-flat major). The melody is written in the treble clef and consists of quarter notes: B-flat, C, D, E, F, G, A, B-flat, A, G, F, E, D, C, B-flat.

A musical staff in 4/4 time with a key signature of one flat (B-flat major). The melody is written in the treble clef and consists of quarter notes: B-flat, A, G, F, E, D, C, B-flat, A, G, F, E, D, C, B-flat.

二. 以下列四個音作為基礎, 將它發展為鋼琴曲, 格式不拘.

A musical staff in treble clef with four quarter notes: B-flat, C, D, E.

（弦子裡奏）





小提琴視奏試題 2

I.

mf *mp mf*

5

mp

中提琴視奏試題 1

II.

mf *cresc.*

5

f *mf* *f*

中提琴視奏試題 2



大提琴視奏試題 1





低音提琴視奏試題 1



低音提琴視奏試題 2

音程

單簧管視奏 <17>

Handwritten musical score for clarinet sight-reading exercise. The score consists of two staves in treble clef with a common time signature (C). The first staff begins with a treble clef, a common time signature, and a key signature of one flat (Bb). The melody features various note values, including quarter, eighth, and sixteenth notes, with some notes beamed together. There are several slurs and accents throughout the piece. The second staff continues the melody with similar note values and slurs. The score ends with a double bar line.

單簧管視奏 <27

Handwritten musical score for a clarinet exercise. The score consists of two staves. The top staff is in treble clef, with a key signature of one sharp (F#) and a time signature of 4/4. It begins with a treble clef, a sharp sign, and the number '4'. The melody starts with a quarter note G4, followed by eighth notes A4 and B4, then a quarter note C5, a quarter note D5, a quarter note E5, a quarter note F#5, a quarter note G5, a quarter note F#5, a quarter note E5, a quarter note D5, a quarter note C5, and a quarter note B4. The bottom staff is also in treble clef, with a key signature of one sharp (F#). It begins with a treble clef and a sharp sign. The accompaniment starts with a quarter note G4, followed by eighth notes A4 and B4, then a quarter note C5, a quarter note D5, a quarter note E5, a quarter note F#5, a quarter note G5, a quarter note F#5, a quarter note E5, a quarter note D5, a quarter note C5, and a quarter note B4. The piece concludes with a double bar line.

長笛 視奏 <1>

Handwritten musical score for flute, consisting of two staves. The top staff begins with a treble clef, a key signature of one sharp (F#), and a common time signature (C). The music features various note values, including eighth and sixteenth notes, and rests. Dynamic markings include 'p' (piano) and 'f' (forte). The bottom staff continues the piece, ending with a double bar line. The notation is handwritten and includes slurs and accents.

長笛 視奏 <2>

Handwritten musical score for flute, consisting of two staves. The top staff begins with a treble clef, a key signature of one sharp (F#), and a common time signature (C). The music features a series of eighth and sixteenth notes, some with slurs and accents. The bottom staff continues the melody with similar rhythmic patterns, including triplets and slurs. Dynamic markings include 'mf' (mezzo-forte) and 'p' (piano). The score concludes with a double bar line.

双簧管 视奏 <1>

The image shows a handwritten musical score for two staves, likely for a double reed instrument. The music is written in G-flat major (one flat) and 4/4 time. The first staff begins with a dynamic marking of *mf* (mezzo-forte). The second staff begins with a dynamic marking of *f* (forte). The score includes various note values, rests, and articulation marks such as slurs and accents. The piece concludes with a double bar line.

双簧管

< 2 >

Handwritten musical score for two oboes in G major, 6/8 time. The score consists of two staves. The first staff starts with a dynamic marking of *mp* and features a triplet of eighth notes in the first measure. The second staff starts with a dynamic marking of *p* and features a triplet of eighth notes in the first measure. Both staves end with a dynamic marking of *f*. The notation includes various note values, rests, and articulation marks.

薩克斯風 視奏 <4>



薩克斯風 視奏 <2>

The image shows a handwritten musical score for saxophone, consisting of two staves of music. The music is written in treble clef with a key signature of one sharp (F#) and a 4/4 time signature. The first staff begins with a treble clef, a sharp sign, and a 4/4 time signature. The melody starts with a quarter rest, followed by a quarter note G4, a quarter note A4, a quarter note B4, and a quarter note C5. A slur covers the next two measures: a quarter note B4 and a quarter note A4. This is followed by a triplet of quarter notes: G4, F#4, and E4. Another triplet of quarter notes follows: D4, C4, and B3. The staff continues with a quarter note A3, a quarter note G3, and a quarter note F#3. A slur covers the final two measures: a quarter note E3 and a quarter note D3. The second staff begins with a treble clef and a sharp sign. It starts with a quarter note D3, a quarter note C3, a quarter note B2, and a quarter note A2. A slur covers the next two measures: a quarter note G2 and a quarter note F#2. This is followed by a quarter note E2, a quarter note D2, and a quarter note C2. A slur covers the next two measures: a quarter note B1 and a quarter note A1. The staff concludes with a quarter note G1, a quarter note F#1, and a quarter note E1. The piece ends with a double bar line.

小號

Handwritten musical score for trumpet in 3/4 time. The score consists of two staves. The first staff begins with a treble clef, a 3/4 time signature, and a key signature of one sharp (F#). The melody starts with a quarter rest, followed by eighth notes: F#4, G4, A4, B4, C5, B4, A4, G4, F#4, E4, D4, C4. The second staff continues the melody with eighth notes: D4, C4, B3, A3, G3, F#3, E3, D3, C3, B2, A2, G2, F#2, E2, D2, C2. The piece concludes with a double bar line and repeat dots.

長號

Handwritten musical score for tuba (長號) in 2/4 time. The score consists of two staves. The first staff begins with a treble clef, a key signature of one flat (B-flat), and a time signature of 2/4. The melody starts with a quarter rest, followed by a quarter note G2, a quarter note F2, a quarter note E2, a quarter note D2, a quarter note C2, a quarter note B1, and a quarter note A1. The second staff continues with a quarter note G1, a quarter note F1, a quarter note E1, a quarter note D1, a quarter note C1, a quarter note B0, and a quarter note A0. The piece concludes with a double bar line.

法國號

Handwritten musical score for French Horn in 3/8 time. The score consists of two staves. The first staff begins with a treble clef, a key signature of one flat (B-flat), and a 3/8 time signature. The music starts with a mezzo-forte (*mf*) dynamic. The first measure contains a quarter note G4, followed by a triplet of eighth notes (A4, B4, C5). The second measure has a quarter note D5, followed by a quarter note E5. The third measure has a quarter note F5, followed by a quarter note G5. The fourth measure has a quarter note A5, followed by a quarter note B5. The fifth measure has a quarter note C6, followed by a quarter note B5. The sixth measure has a quarter note A5, followed by a quarter note G5. The seventh measure has a quarter note F5, followed by a quarter note E5. The eighth measure has a quarter note D5, followed by a quarter note C5. The ninth measure has a quarter note B4, followed by a quarter note A4. The tenth measure has a quarter note G4, followed by a quarter note F4. The eleventh measure has a quarter note E4, followed by a quarter note D4. The twelfth measure has a quarter note C4, followed by a quarter note B3. The thirteenth measure has a quarter note A3, followed by a quarter note G3. The fourteenth measure has a quarter note F3, followed by a quarter note E3. The fifteenth measure has a quarter note D3, followed by a quarter note C3. The sixteenth measure has a quarter note B2, followed by a quarter note A2. The dynamic changes to mezzo-piano (*mp*) at the start of the second staff. The first measure of the second staff has a quarter note G3, followed by a quarter note F3. The second measure has a quarter note E3, followed by a quarter note D3. The third measure has a quarter note C3, followed by a quarter note B2. The fourth measure has a quarter note A2, followed by a quarter note G2. The fifth measure has a quarter note F2, followed by a quarter note E2. The sixth measure has a quarter note D2, followed by a quarter note C2. The seventh measure has a quarter note B1, followed by a quarter note A1. The eighth measure has a quarter note G1, followed by a quarter note F1. The ninth measure has a quarter note E1, followed by a quarter note D1. The tenth measure has a quarter note C1, followed by a quarter note B0. The dynamic changes to forte (*f*) at the start of the eleventh measure. The eleventh measure has a quarter note A0, followed by a quarter note G0. The twelfth measure has a quarter note F0, followed by a quarter note E0. The thirteenth measure has a quarter note D0, followed by a quarter note C0. The fourteenth measure has a quarter note B0, followed by a quarter note A0. The fifteenth measure has a quarter note G0, followed by a quarter note F0. The sixteenth measure has a quarter note E0, followed by a quarter note D0. The score ends with a double bar line.